

# THE BEAUTY PLACE

HOVE

## THE BEAUTY PLACE

HOVE

### Appointment Hours

Please note that while our receptionist will usually greet you, access may be limited at times when a team member is unavailable. We appreciate your understanding and look forward to welcoming you at your scheduled visit.

Monday	-	Closed
Tuesday	-	9am - 6pm
Wednesday	-	9am - 7pm
Thursday	-	9am - 7pm
Friday	-	9am - 6pm
Saturday	-	9am - 5pm
Sunday	-	Closed
Bank Holidays	-	Hours may vary

For detailed information about our treatments, services, and expertise, visit: [www.thebeautyplacehove.com](http://www.thebeautyplacehove.com)

As a small business, we kindly ask that you provide as much notice as possible if you need to reschedule or cancel your appointment.

Deposits may be required for certain bookings. Cancellations, changes made with less than 48 hours' notice, or missed appointments will be charged in full. Thank you for your understanding and support.



34 Holland Road, Hove, BN3 1JL  
01273 770 880 | [info@thebeautyplacehove.com](mailto:info@thebeautyplacehove.com)

[www.thebeautyplacehove.com](http://www.thebeautyplacehove.com)



34 Holland Road, Hove, BN3 1JL  
01273 770 880 | [info@thebeautyplacehove.com](mailto:info@thebeautyplacehove.com)

[www.thebeautyplacehove.com](http://www.thebeautyplacehove.com)

# THE BEAUTY PLACE

HOVE

## Expert Beauty and Advanced Skincare Specialists

Nestled just off Palmeira Square in the heart of Hove, The Beauty Place is an award-winning, luxury clinic offering exceptional treatments in a welcoming, professional environment.

We're a team of highly trained aesthetic therapists, passionate about delivering a superior client experience. Using only the finest, clinically-proven products and advanced equipment, we combine our expertise to create bespoke, results-driven treatments.

We stay at the forefront of skincare innovation, using the latest technology and science-backed products to deliver effective, tailored results. Our holistic approach focuses on long-term skin health, not quick fixes.

At The Beauty Place, you'll find not only expertise but a team who genuinely care. We believe in building real, lasting connections with our clients - offering honest advice, friendly service, and treatments that truly work. Whether for Electrolysis, waxing, massage, or a bespoke skin treatment, expect the best products, expert care, and a warm, welcoming space.

iiaa™

ADVANCED  
NUTRITION  
PROGRAMME™

ENVIRON.  
stockist

Hydrafacial™

imedpen®

lynton

CACI

Dermalux®

et al.

NuEraTight  
by Luminis

1.

## Skin Health Consultation with Eventis

Every great skin transformation begins with a thorough understanding of your skin.

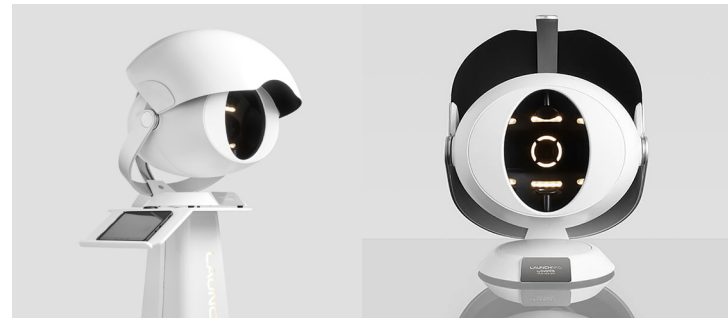
We are committed to cutting through skincare myths and misinformation, providing honest, science-backed advice to help you achieve healthy, radiant skin with confidence.

Our Skin Health Consultation combines expert guidance with advanced digital skin analysis using Eventis, a state-of-the-art device that captures high-definition images and moisture levels to assess your skin's true needs.

With this insight, we create a completely personalised treatment and product plan tailored to your unique concerns and goals.

Regular scans and access to the Eventis app allow us and you to easily track progress, refine your plan, and ensure optimal, long-lasting results.

£50



2.

## Environ Skin Treatments

*electro-sonic*

### Essential Treatments

Environ's pioneering dual electro-sonic technology sets the benchmark for professional skincare treatments. Low frequency sonophoresis together with pulsed iontophoresis in combination with Environ's professional skin care products, help deliver more of what skin needs where it needs it most - making a real lasting difference to your skin, for life.

### Essential Youth Reset

Helps soften the appearance of fine lines, sun-damage and sagging skin with our peptide and vitamin packed facial for a more youthful appearance.

60<sub>min</sub> £98  
90<sub>min</sub> £120

### Essential Moisture Boost

Helps reduce the appearance of fine lines caused by dehydration and increases the plumpness of the deeper layers of the skin. Hyaluronic Acid is the hero ingredient, promoting a moisturised, glowing-looking skin.

60<sub>min</sub> £98  
90<sub>min</sub> £120

### Essential Comfort Calm

Ideal for sensitive, irritated skin. A powerful combination of smart ingredients, leaving the skin feeling soothed with a healthy radiance.

60<sub>min</sub> £98  
90<sub>min</sub> £120

### Essential Radiance Reveal

A targeted solution for sun-damaged or pigmented skin. Boosting the skin with the correct combination of ingredients, results in flawless, radiant-looking skin.

60<sub>min</sub> £98  
90<sub>min</sub> £120



*electro-sonic*

### Focus-On Treatments

Specially developed to target specific areas using Environ's revolutionary dual electro-sonic DF technology, ensuring that your primary skincare concerns are directly addressed.

Perfect for when time is limited.

#### Focus-On Frown Treatment

An iconic peptide blend assists in reducing the appearance of expression and frown lines around the eyes and forehead, resulting in a more youthful appearance.

30<sub>min</sub> £49

---

#### Focus-On Eye Treatment

Combining our powerful peptide complexes with Hyaluronic Acid, ensures a completely refreshed, hydrated and youthful appearance.

30<sub>min</sub> £49

---

#### Focus-On Texture Treatment

An intensive combination of the three Environ technologies; Dual ELECRO-SONIC, COOL PEEL and MICRO PERFUSION improve the appearance of mild scarring, revealing smoother, evenly textured skin.

30<sub>min</sub> £64

### Focus-On Even Tone Treatment

The powerful combination of vitamin A, C and AHA is a unique approach to assist in lightening the appearance of pigmented marks, resulting in a more even-toned, brighter complexion.

30<sub>min</sub> £49

---

#### Focus-On Jowl Profile

This powerful sculpting treatment will improve the appearance of an unwanted double chin. The effective combination of active ingredients, with our dual electro-sonic DF technology, assist in firming and conditioning, and helps to maintain a smoother, suppler and toned-looking skin.

30<sub>min</sub> £49

---

#### Focus-On Filler

Developed as an alternative to dermal fillers, this non-invasive treatment provides natural-looking enhancement; treating lines, wrinkles and loss of facial volume.

30<sub>min</sub> £49

---

#### Focus-On Body Profile

This powerful body treatment targets the appearance of dimpled, lax and uneven skin texture in specific areas (including the jaw line). The effective combination of active ingredients promotes a visibly smoother firmer and contoured appearance.

30<sub>min</sub> £70

## Skin Peels

Environ's unique Cool Peel® Technology is a non-invasive, intelligent skin renewal system developed by Dr Des Fernandes. Using TCA, lactic acid or highly-active vitamin C, we safely and effectively help refine, revive and brighten skin.

### Youth Renew TCA Cool Peel

This cool peel treatment assists with reducing the appearance of premature ageing, fine lines, sun-damage and an uneven skin complexion. Discover the power of an intelligent skin peel that will leave the skin looking refreshed and vibrantly youthful.

60-90<sub>min</sub> £110-£144

### Blemish Control TCA Cool Peel

This powerful cool peel therapy assists with the management of blemish-prone, distressed skin, by purifying, cleansing and assisting to unclog pores and dissolve impurities. Our hero treatment for problematic skin conditions.

60-90<sub>min</sub> £110-£144

### Focus-On Texture TCA Cool Peel Treatment

An intensive combination of the three Environ technologies; Dual ELECTRO-SONIC, COOL PEEL and MICRO PERFUSION improve the appearance of mild scarring, revealing smoother, evenly textured skin.

30<sub>min</sub> £64

### Deep Cleansing Cool Peel

Environ's interpretation of the classic deep cleanse facial. This unique method of deep cleansing the skin is gentle in exfoliating the skin's surface, yet effective in purifying and assisting to control the appearance of congested, breakout-prone skin. This unique, gentle peel helps to achieve visible improvements, leaving the skin looking radiantly healthy and refreshed.

60<sub>min</sub> £110

### Moisture Boost Cool Peel

Designed to gently buff the skin's surface and focus on revitalising dry, tired-looking skin, revealing a healthy-looking glow. This gentle yet effective peel is suitable to do all year round, with no visible peeling.

60<sub>min</sub> £110

### Bright Recovery Cool Peel

This gentle lactic acid cool peel assists with reducing the appearance of premature ageing, fine lines and uneven skin tone as a result of excessive sun exposure.

60-90<sub>min</sub> £110-£144

#### WHY ENVIRON COOL PEELS?

- Fast-track results
- Progressive yet gentle
- No downtime
- Pioneered by world-leading plastic surgeon, Dr Des Fernandes

### Vibrant-C Micro Peel

A concentrated, vitamin C infused peel that is freshly mixed before application to ensure optimal freshness and efficacy. Proven to deliver a healthy complexion with an even skin tone and texture because vitamin C is essential for the skin to function at its best. An excellent choice for sun-damaged, pigmented and mature skins.

45<sub>min</sub> £96

### Rosacea Cool Peel

Created by leading Rosacea experts, this treatment is designed to reduce redness, calm inflammation and improve overall skin texture, even for the most sensitive skins. By gently stimulating skin renewal, it promotes a smoother, more even complexion with minimal downtime. This soothing approach supports the skin's natural regeneration, leaving it healthier, stronger, and more resilient over time.

45<sub>min</sub> £96



9.

### Microneedling

Microneedling stands firmly as one of the best, scientifically-proven treatments for incredible skin rejuvenation.

The treatment is a form of collagen induction therapy where a series of tiny, ultra-fine needles penetrate the skin at a vertical angle using a specialist medical device, for faster and more precise needle penetration. The procedure causes thousands of micro-injuries, which leads to increased collagen production, effectively repairing scars, reducing discolouration and renewing tired looking skin.

The imedpen has revolutionised micro skin needling, making it easier, safer and less painful to get maximum results compared to traditional derma-roller skin needling. The results are more extraordinary, longer lasting and treatment time is faster, making this a top choice for anyone looking to achieve younger, smoother and firmer skin.

45-60<sub>min</sub> £135

Including Dermalux LED Phototherapy £164



10.

## Hydrafacial

We were the first skin clinic in Hove to offer the Syndeo®  
The newest, most advanced Hydrafacial system.\*

The world-famous, multi award-winning Hydrafacial is a non-invasive treatment that, unlike traditional facials, is performed via device rather than by hand, for deeper penetration and longer lasting results.

The innovative handpiece works like a vacuum to open pores, deep cleanse and ease the extraction of impurities. This also allows the active ingredients in the Hydrafacial boosters to penetrate deeper, for a more effective treatment.

Hydrafacial starts with 3 essential steps:

### Cleanse

Deeply cleanses and exfoliates with a gentle peel to uncover a new layer of skin.

### Extract

Removes impurities from pores with gentle vacuum suction.

### Hydrate

Saturates the skin's surface with intense moisturisers and nourishing, personalised ingredients.

From there, you can then choose additional ways to personalise:

\*Information correct at time of printing

### Nourish

Boosters are potent formulas packed with active ingredients that target and treat specific concerns, using exclusive, concentrated formulas.

### Rejuvenate

Professional strength LED light therapy addresses appearance of wrinkles and mild to moderate acne

### Sculpt

Lymphatic therapy help lift, contour, and reduce puffiness.

**45<sub>min</sub> Deluxe Hydrafacial £145**  
**60<sub>min</sub> Platinum Hydrafacial £185**



## HydraFacial Body Treatments

Extend the benefits of the HydraFacial treatment to other parts of the body to deeply cleanse, exfoliate, extract, and hydrate the skin. Additional savings are available when adding on to a Signature HydraFacial treatment.

### Neck and Décolleté

10 min stand-alone	£120
Add-on with Deluxe HydraFacial	£95

### Hands

15 min stand-alone	£80
Add-on with Signature HydraFacial	£50

### Arms

15 min stand-alone	£180
Add-on with Signature HydraFacial	£160

### Back

30 min stand-alone	£250
Add-on with Signature HydraFacial	£230

### Back Clarifying

70 min stand-alone	£300
--------------------	------

## Lynton IPL Laser Skin Treatments

IPL stands for Intense Pulsed Light, which is a form of light therapy used for various dermatological procedures and hair removal treatments.

At The Beauty Place, we offer Skin Rejuvenation using the most advanced aesthetic IPL system in the UK. The Excelight IPL system supplied by the UK's No.1 manufacturer - Lynton.

Lynton have manufactured specialist aesthetic equipment for over 20 years and are an approved supplier on the NHS Supply chain.

Lynton Excelight IPL treatments offer excellent results for all visible signs of aging and skin damage, including:

- + Sun Damage
- + Thread Veins/Redness (inc. Blood Spots and Spider Naevi)
- + Brown Spots (Pigmentation)
- + Fine Lines and Wrinkles
- + Sagging Skin (loss of collagen and elastin)
- + Acne
- + Scarring
- + Rosacea and Redness

Consultation, including patch testing and homecare is required.

30<sub>min</sub> £45



+ Thread Vein Treatment	From £110
+ Single Lesion Pigmentation Treatment	From £110
+ Pigmentation Treatment (Multiple Areas)	From £130
+ Acne or Rosacea Treatment	From £140
+ Full Face Rejuvenation	From £160

### Ultimate Hand Rejuvenation

The perfect combination of a resurfacing skin peel, together with IPL laser rejuvenation, is a highly effective solution for ageing hands. This treatment effectively improves the appearance of brown spots, wrinkles and loss of elasticity, resulting in fresher, more youthful looking hands.

30min £110



15.

### Lynton Illumifacial®

IllumiFacial® is the 'next generation' of the highly successful 'photo-facial' skin treatment, using a new combination of specialist Lynton skincare, together with powerful, medical-grade Lynton IPL technology.

This quick and simple skin rejuvenation treatment dramatically improves skin tone and appearance due to its ability to promote cellular activity and subtly restructure collagen within the skin.

IllumiFacial® will help to even out areas of uneven pigmentation and treat broken thread vessels. In combination with a specially selected formulation of acids and enzymes, the illumiFacial® treatment results in a fresher, flawless complexion and a reduction in open pores.

60min £210  
Inc. the neck £240



16.

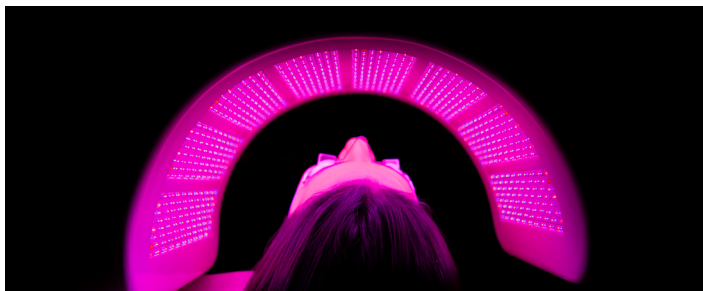
## Dermalux® LED Phototherapy

Multi-Award winning Dermalux® LED Phototherapy is the leading, non-invasive treatment that harnesses the power of natural light for visibly radiant, rejuvenated and refined skin. The Dermalux® Tri-Wave MD is currently the most powerful LED machine in the world, delivering results above and beyond any other LED treatment.

Dermalux® LED Phototherapy delivers skin specific treatments using combinations of clinically proven Blue, Red and Near Infrared wavelengths to boost collagen and elastin production, improve circulation, reduce redness and irritation and blitz blemish causing bacteria.

Utilising the latest generation LED technology, Dermalux® ensures a completely safe and targeted delivery of light. It is heat free, chemical free and does not harm the skin. Dermalux® has an excellent safety profile and is beneficial for all skin types without downtime.

20<sub>min</sub> £50  
10<sub>min</sub> add-on £29



## Lumenis Nuera Tight Radio Frequency

NuEra Tight is a non-invasive, temperature-controlled, Radio Frequency (RF) treatment, which improves the appearance of skin laxity without downtime.

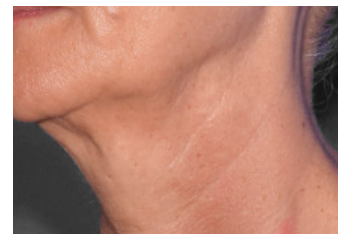
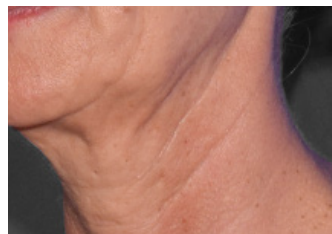
Unlike older radio frequency devices, the innovative Lumenis® NuEra Tight has the ability to precisely deliver heat to the desired depth within the tissue over a certain amount of time to ensure consistent and reliable results.

The deep dermal heating enhances collagen production, which effectively smooths the appearance of fine lines and wrinkles, and dramatically tightens loose and sagging skin.

Unlike some advanced skin treatments that can be a little uncomfortable at times, the NuEra Tight is very relaxing and has a similar sensation to that of a hot stone facial massage.

For more in-depth information and FAQs, please visit the 'Treatments' section of our website.

Full Face Including Neck £150  
Full Face £115  
Multiple Area £80



## Advanced Blemish Removal

### Facial Thread Vein Treatment

We safely and effectively treat a wide range of skin lesions using Thermolysis with Sterex Advanced Electrolysis or our medical-grade Lynton IPL Laser system.

During your consultation, our highly trained and experienced professionals will determine the most suitable treatment option for you.

+ Facial Thread Veins	From £110
+ Milia	From £80
+ Skin Tag	From £130
+ Solar Keratosis	From £160
+ Seborrheic Keratosis	From £160
+ Flat Warts	From £160
+ Spider Naevi / Cherry Angioma / Blood Spots	From £110

For more in-depth information and FAQs on these skin concerns and treatment, please visit our website.



## Polynucleotide Skin Boosters

### The future of skin regeneration is here

Polynucleotide treatments work at a cellular level to repair, renew, and restore your skin from within. These powerful bio-stimulators - derived from purified DNA fragments - activate your skin's fibroblast cells, stimulating natural collagen and elastin production while reducing inflammation and promoting deep hydration.

Unlike traditional skin boosters that offer surface-level hydration, Polynucleotides improve skin quality over time, helping to visibly soften fine lines, enhance skin elasticity, and support long-term skin health.

#### Ideal for:

- + Under-eye rejuvenation
- + Facial fine lines & wrinkles
- + Neck and décolleté tightening
- + Improving skin tone & texture
- + Healing sun-damaged or scarred skin

#### How it works:

A course of 2–3 treatments is recommended, spaced around 3-4 weeks apart. Using an ultra-fine needle, the solution is gently introduced into the uppermost layer of the skin. Results develop gradually, with improvements often visible from 3-4 weeks post-treatment, continuing to improve over several months as your skin naturally regenerates and strengthens.

From £245

## CACI Lifting Treatments

CACI's award-winning, facial toning treatments have become known as "the non-surgical face lift." A unique combination of specific waveforms, tiny electrical impulses and ultra-low frequencies work in harmony with the body's bio-electrical field, to tone the facial muscles and rejuvenate the skin.

CACI also combines perfectly with our NuEra Radio Frequency treatments, for the ultimate in bespoke lifting and tightening for the face.

### CACI Ultimate

This ultimate anti-ageing treatment incorporates the traditional CACI facial lift with the added benefits of gentle microdermabrasion, LED light therapy and a deeply hydrating mask. The CACI Ultimate helps to redefine facial contours, plump fine lines and wrinkles and tackle a wide range of skin imperfections.

90<sub>min</sub> £125

### CACI Non-Surgical Face Lift

The classic CACI lifting and firming treatment to redefine facial contours, boost radiance and smooth fine lines and wrinkles.

60<sub>min</sub> £85

### Super CACI Non-Surgical Facelift

The CACI Non-Surgical Face Lift with extended lifting time.

75<sub>min</sub> £105

### CACI Jowl Lift

Lifting and firming the most common area of concern, this express treatment helps to redefine a sagging jawline.

25<sub>min</sub> £45

### Intense Jowl Contour

A powerful combination of CACI lifting technology and NuEra Tight Radiofrequency. This jowl-focused treatment helps to tone the muscles of the lower face, whilst stimulating collagen, resulting in a smoother, tighter and more lifted appearance.

45<sub>min</sub> £100

### Revital-Eyes

A dynamic-duo of CACI microcurrent and Environ Focus-On Filler treatment, together with pressure point and drainage massage, effectively lifts, plumps and brightens the delicate eye area.

75<sub>min</sub> £135

## Microdermabrasion

A deeply exfoliating, abrasive skin treatment to reveal a brighter, smoother and clearer complexion.

Using innovative abrasion technology, precise control over the depth of exfoliation is achieved and can be specifically tailored to suit all skin types. Abrasion of the skin reveals a softer, brighter and more youthful complexion.

An effective treatment for photodamage, open pores, congestion and scarring, our microdermabrasion treatment also incorporates the use of LED phototherapy to further enhance the results.

45<sub>min</sub> £99



## Et al. Make-Up Consultation

### Meet the makeup that does more.

Et al. pioneering makeup blends the science of skincare with the joy of makeup, while being responsible to the planet.

Et al. believe that makeup should not undo the visible benefits you witness with your skincare routine, instead providing protective, hydrating qualities that last.

Vegan. Cruelty-Free. Recyclable.

Non-Comedogenic. Hypoallergenic. Dermatologist tested.

Our one-to-one consultations will provide you with the knowledge of which make-up products are best suited to your skin, and how to apply them.

Consultations are £30, which is redeemable on the purchase of two or more Et al. make-up products.



## Signature Bespoke Facials

Applying our extensive skincare knowledge to deliver highly-effective, bespoke treatments, our facials are uniquely tailored to the needs of each individual at the time of their visit.

These powerful, rejuvenating facial treatments combine specific technologies to deliver greater benefits than having them individually. This ensures deeper, more efficient treatment with greater visible results.

For more in-depth information and FAQs, please visit the 'Treatments' section of our website.

### The Vita-Indulge

Science meets luxury with this delightful fusion of a personalised Environ Essential Skin treatment, together with deeply relaxing facial massage.

75<sub>min</sub> £115  
105<sub>min</sub> £140

### The Vitamin Lift

Combining the powerful active ingredients of an Environ Essential treatment with CACI microcurrent face lifting. This treatment targets skin concerns, and underlying facial muscles, to lift and boost radiance.

105<sub>min</sub> £160

### The Beauty Place Signature Supreme Facial

The ultimate union of our most advanced, science-driven technologies. Skin peeling, NuEra Tight Radiofrequency, Dermapen micro-needling and Dermalux LED phototherapy, results in the most superior skin renewal.

105<sub>min</sub> £320

### The Iconic Facial

The perfect pre-event treatment to smooth, tighten and brighten. A gentle skin peel is combined with NuEra Tight Radiofrequency and Dermalux LED phototherapy, ensuring a beautiful photo-ready complexion.

75<sub>min</sub> £180

### Intense Jowl Contour

A powerful combination of CACI lifting technology and NuEra Tight Radiofrequency. This jowl-focused treatment helps to tone the muscles of the lower face, whilst stimulating collagen, resulting in a smoother, tighter and more lifted appearance.

45<sub>min</sub> £100

### Revital-Eyes

A dynamic-duo of CACI microcurrent and Environ Focus-On Filler treatment, together with pressure point and drainage massage, effectively lifts, plumps and brightens the delicate eye area.

75<sub>min</sub> £135



## Advanced Body Treatments

### E.C.M

The Electro Cellulite Massage (E.C.M) combines the therapeutic benefits of massage with the effectiveness of micro-current therapy. The rollers are designed to pivot to the body contours of each individual, targeting specific problem areas. The stimulatory action of the E.C.M helps to break down fatty deposits, tone muscles and reduce inches.

45<sub>min</sub> £70

### Focus-On Body Profile

This powerful body treatment targets the appearance of dimpled, lax and uneven skin texture in specific areas (including the jaw line). The effective combination of active ingredients promotes a visibly smoother firmer and contoured appearance.

30<sub>min</sub> £78



## AromaWorks Facials and Massage

Every treatment uses 100% natural, ethically sourced essential oils, crafted in the UK to relax skin, body, and mind.

### Aromatherapy Massage

Warm balms blended with essential oils ease tension, stress and fatigue.

Full Body Including Head and Face	85 <sub>min</sub>	£95
Full Body	55 <sub>min</sub>	£75
Back, Head and Face	40 <sub>min</sub>	£60

### Absolute Deluxe Facial

A luxurious fusion of our Facial and Eye treatments. Includes cleanse, exfoliation, active mask, and your choice of Scalp, Hand or Foot massage. Leaves skin lifted, bright and radiant.

75<sub>min</sub> £95

### Absolute Facial

Tailored for all skin types. With Coenzyme Q10, Hyaluronic Acid and premium oils to deeply hydrate, smooth, and restore glow. Includes a Hand or Foot massage.

60<sub>min</sub> £70

### Absolute Eye Treatment

Targets puffiness, dark circles and fine lines using Arnica, Marine actives and gentle drainage techniques.

30<sub>min</sub> £55



29.

## Massage And Reflexology

Full Body, Including Head and Face	85 <sub>min</sub>	£90
Full Body	55 <sub>min</sub>	£75
Back, Neck and Shoulder	25 <sub>min</sub>	£45

Our expert therapists specialise in a range of different forms for massage:

- + Swedish
- + Deep Tissue
- + Pregnancy
- + Oncology
- + Lymphatic Drainage

### Reflexology

Reflexology uses targeted foot massage and acupressure to relax, restore balance, and support the body's natural healing. A deeply nurturing treatment, especially when paired with a body massage.

45<sub>min</sub> £70



30.



## Lynton IPL Laser Hair Removal

IPL stands for Intense Pulsed Light, which is a form of light therapy, similar to laser, used for various dermatological procedures and hair removal treatments.

At The Beauty Place, we offer hair removal treatments using the most advanced aesthetic IPL system in the UK. The Excelight IPL system supplied by the UK's No.1 manufacturer - Lynton.

Lynton have manufactured specialist aesthetic equipment for over 20 years and are an approved supplier on the NHS Supply chain. A team of Ph.D. scientists design, develop and test all their products to ensure that their systems achieve the most effective but safest results possible.

Lynton IPL hair removal treatments offer a safe, long-term solution to unwanted, excess hair for both men and women and are suitable for most areas of the face and body. Treatments are carried out in minimal time and results can be seen after just a few sessions.

A course of IPL treatments are usually required at 4 - 8 weekly intervals to follow the hair growth cycle. Treatment will leave your skin feeling smooth, soft and free from painful in-growing hairs.

Consultation and patch testing is required.

From **£45**

## Hair Removal

We pride ourselves on our remarkably comfortable, expert, intimate waxing technique, using strip-free Harley Hot Wax system.

### Waxing

Hollywood	£42
Brazilian	£38
G-String/Extended Bikini	£32
Standard Bikini	£24
Full Leg	£42
$\frac{3}{4}$ Leg	£36
Half Leg (Lower)	£30
Half Leg (Top)	£34
Full Leg and Hollywood	£80
Full Leg and Brazilian	£76
Full Leg and G-String Bikini	£70
Full Leg and Standard Bikini	£65
Full Arm	£29
Forearm	£22
Under Arm	£22
Nostrils	£15
Eyebrows	£18
Chin	£18
Upper Lip	£17
Upper Lip and Chin	£33
Upper Lip, Chin and Eyebrows	£48

**Men's Waxing**

Back and Shoulders	£41
Half Back (Upper or Lower)	£29
Shoulders and Upper Arms	£24
Chest and Abdomen	£41
Chest	£35
Eyebrows	£18
Nostrils	£15
Ears	£17

**Electrolysis**

The efficient and permanent technique of hair removal, suitable for small areas of the face and body.

Up To	5min	£20
	10min	£26
	15min	£34
	25min	£55
	40min	£76



**Eyelash and Brow Treatments**

Eyelash Tint	£23
Eyebrow Tint	£20
Eyebrow Shape	£18
Eyebrow Tint and Shape	£32
Eyelash Tint and Eyebrow Tint	£40
Eyelash Tint and Eyebrow Shape	£35
Eyelash Tint, Eyebrow Tint and Eyebrow Shape	£46

Patch testing for tinting is compulsory for all new clients.

